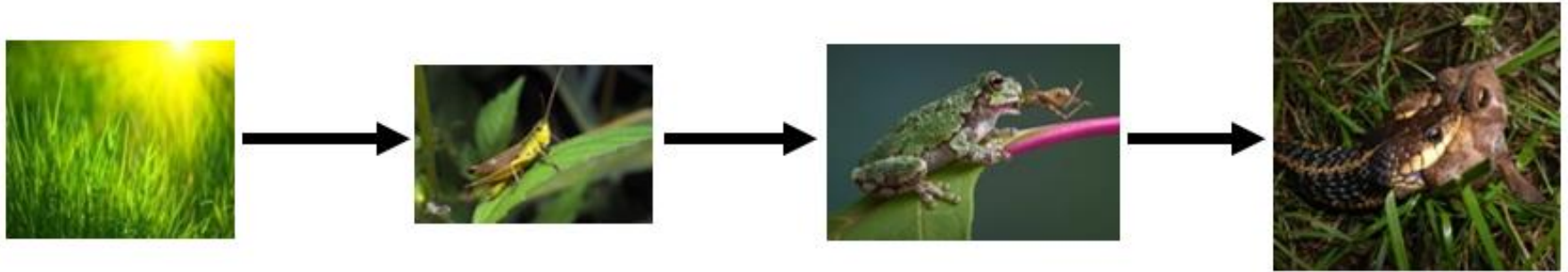


# Energy Flow Through Living Systems

## Picture Vocabulary

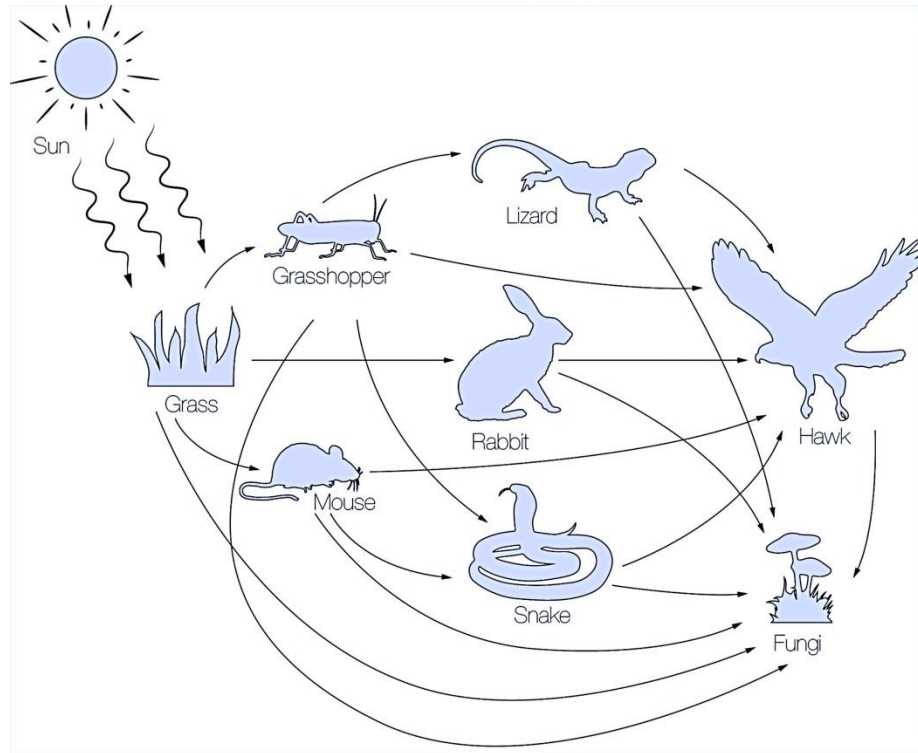
Matter and Energy

# Food Chain



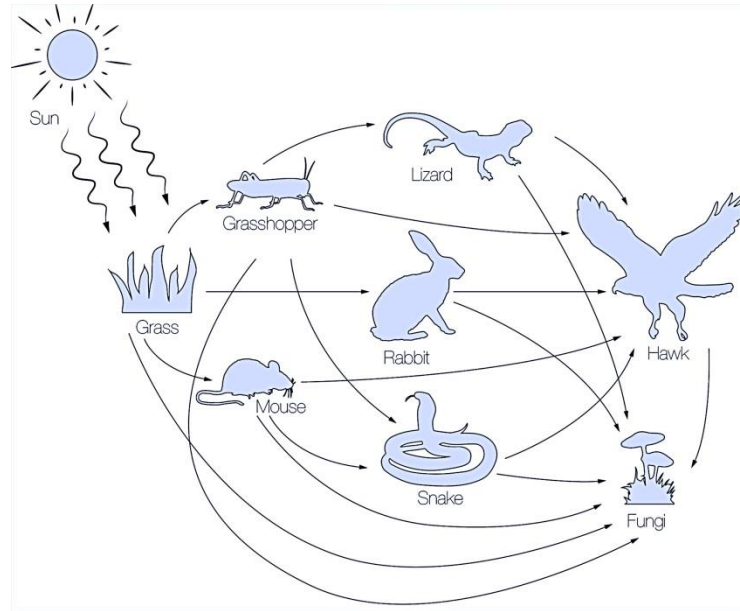
A single, linear path showing the flow of energy from the sun to producer and through different levels of consumers.

# Food Web



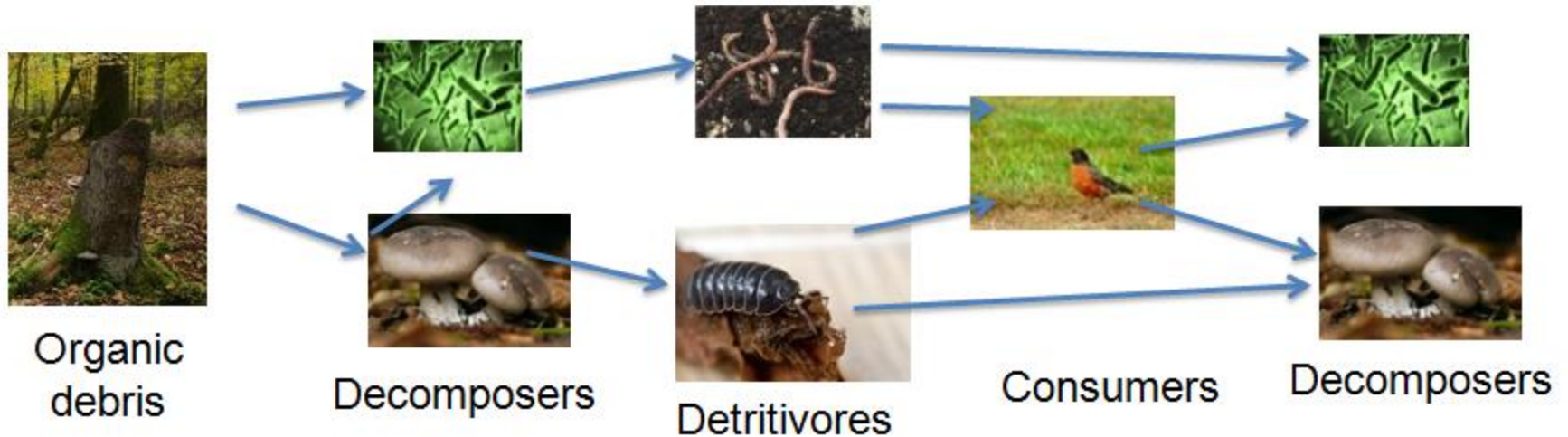
Overlapping food chains with different pathways for the flow of food energy in an ecosystem.

# Grazing Food Web



Starts with radiant energy captured by producers (plants) through photosynthesis, and continues with energy flow from producers to consumers and finally to decomposers.

# Detrital Food Web



Starts with chemical energy stored in organic debris or waste from other food webs; continues energy flow from debris directly to decomposers that break down the organic matter, which then becomes food and energy for large and larger consumers, and eventually decomposers.

# Producers



Organisms that make complex, energy-containing biomolecules from simple inorganic molecules using energy captured from light or inorganic chemical compounds.



# Consumers



An organism that must consume other organisms for nutrients.

# Herbivores



Organisms that consume only plants.



# Carnivores



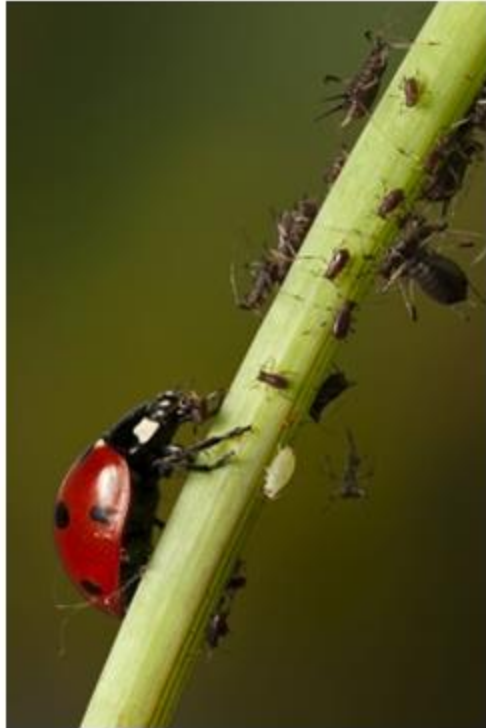
Animals that eat other animals.

# Primary Consumers



An organism that gets their energy by feeding on producers in the food chain.

# Secondary Consumers



Aphids eat plants, and ladybugs eat aphids.

Animals that eat other animals that eat plants.

# Tertiary Consumers



Animals that eat secondary consumers.

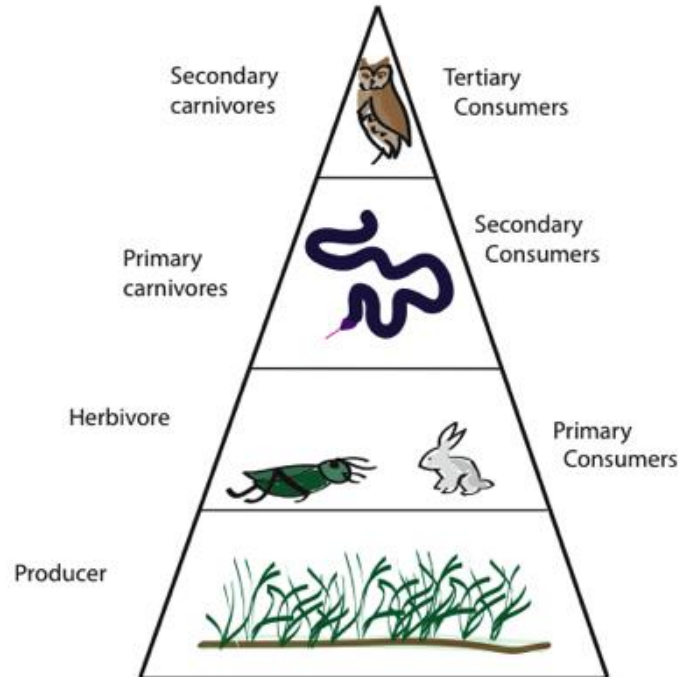


# Decomposers



Organisms such as bacteria and fungi that break down the remains of dead plants and animals without need for internal digestion.

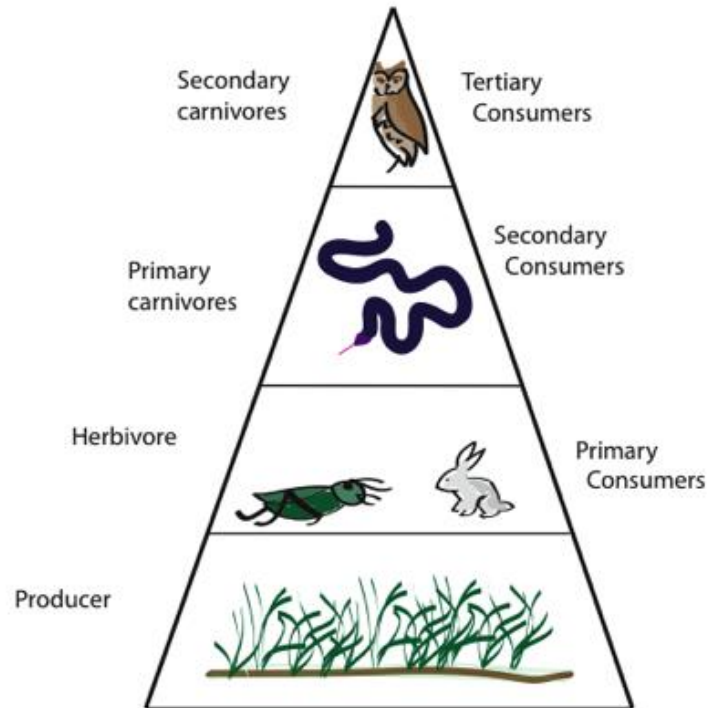
# Trophic Level



The position an organism occupies on the food web.



# Energy Pyramid



A diagram that shows the trophic levels of organisms in a food web.

# Ecosystem



A system comprising all the biotic and abiotic factors in an area and all the interactions among them.