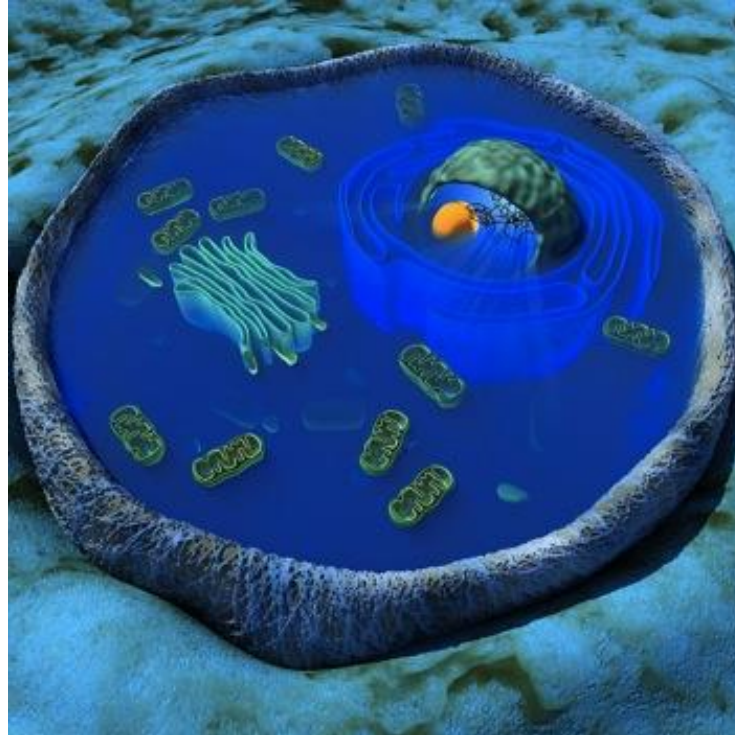


# Plant and Animal Cell Organelles

## Picture Vocabulary

Organisms and Environments

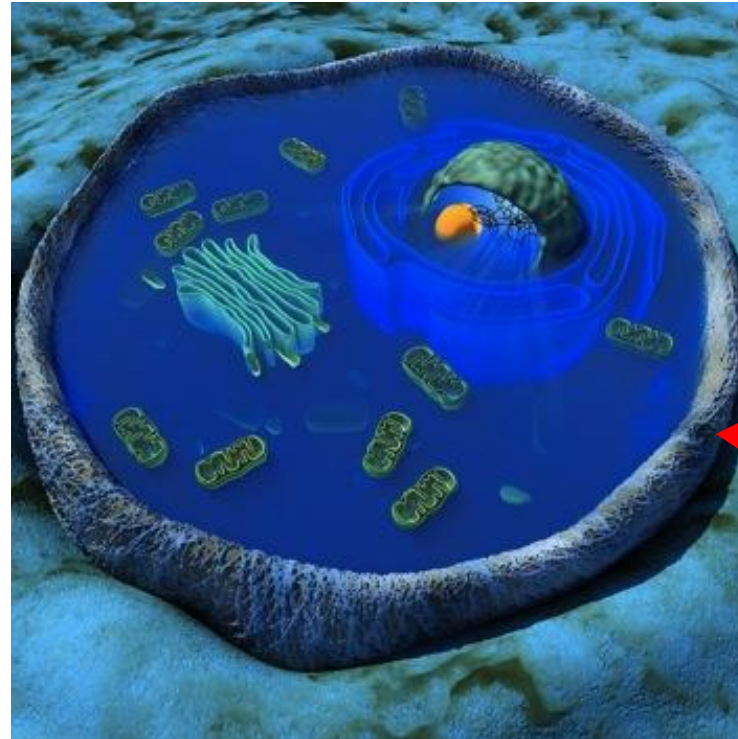
# Organelle



A 3D  
illustration of  
an animal cell  
cross section

A membrane-bound structure inside a cell that performs a specialized function.

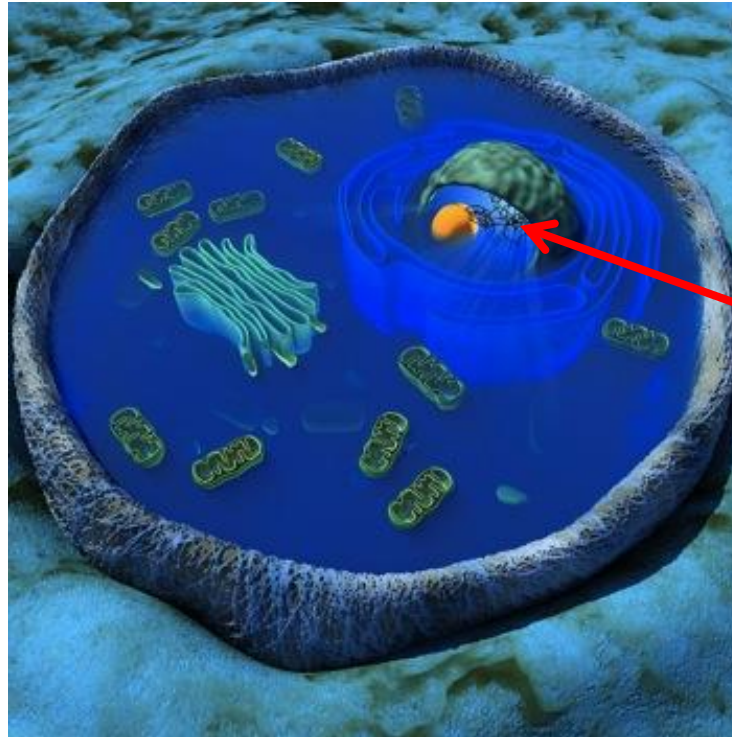
# Cell Membrane



Cell Membrane

A lipid barrier that encloses the cytoplasm and controls what enters and exits the cell.

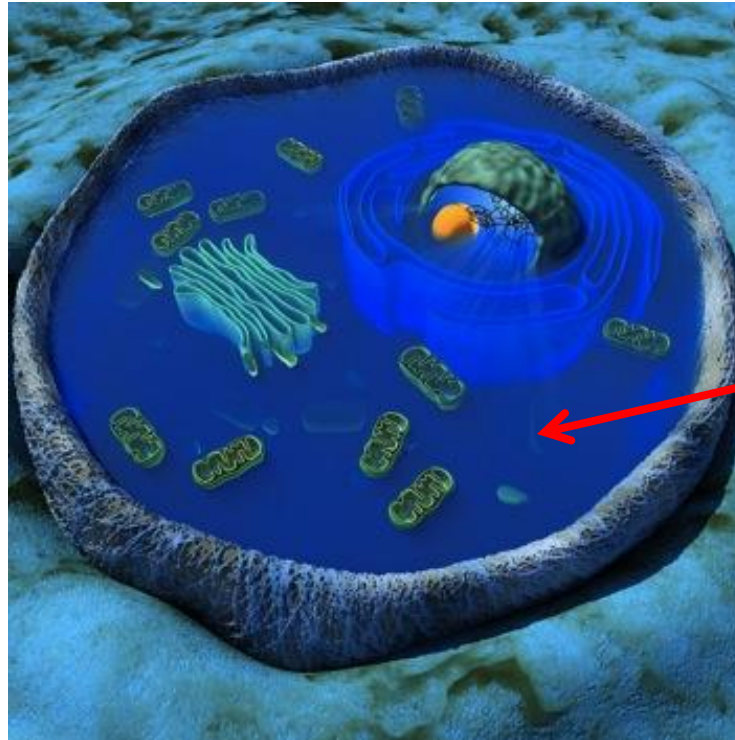
# Nucleus



Cell Nucleus

A membrane-bound structure in eukaryotic cells that contains the DNA.

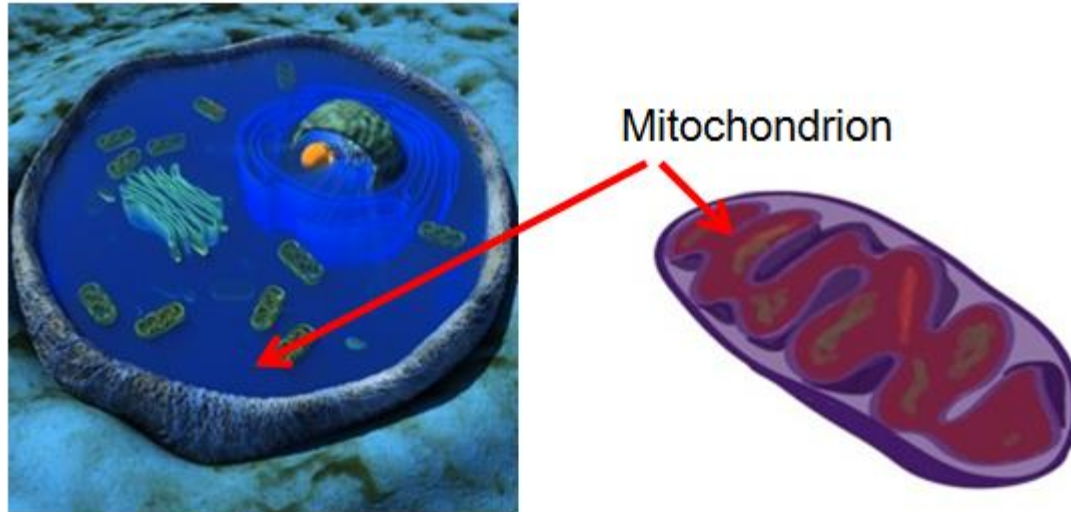
# Cytoplasm



Cytoplasm

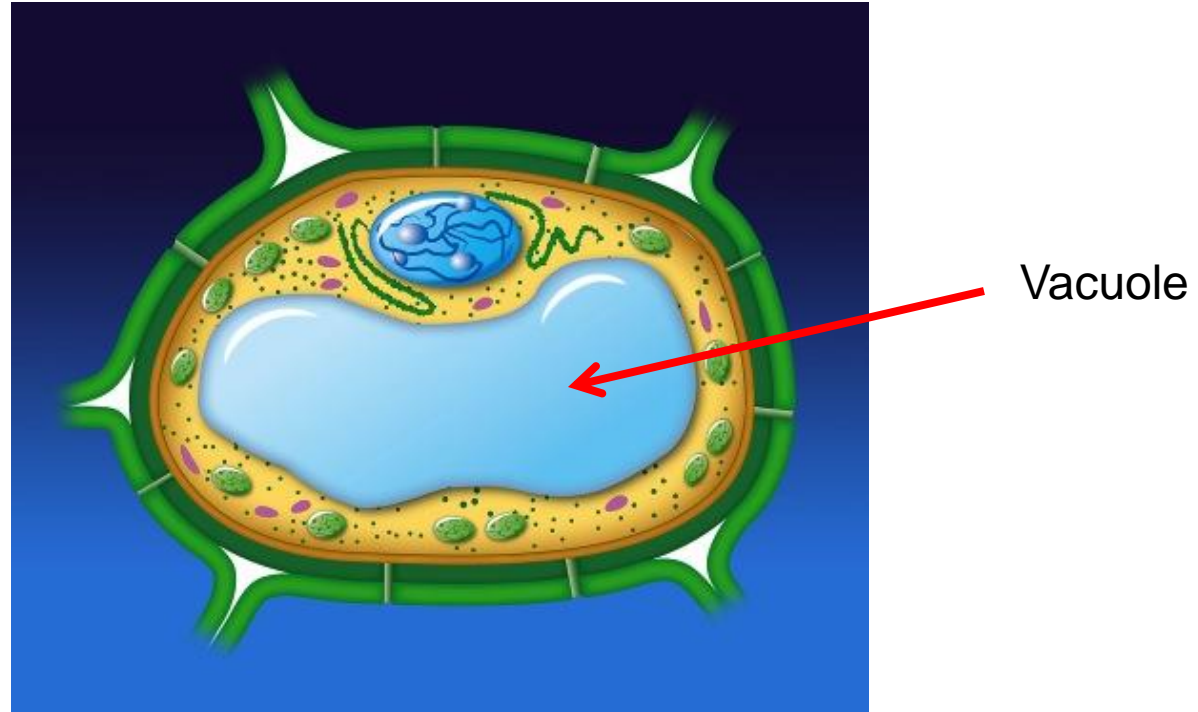
The jelly-like material inside the outer membrane of a cell that holds the nucleus, organelles, and other components of the cell.

# Mitochondrion



An organelle in the cytoplasm of eukaryotic cells that functions in energy production, the power factory of the cell.

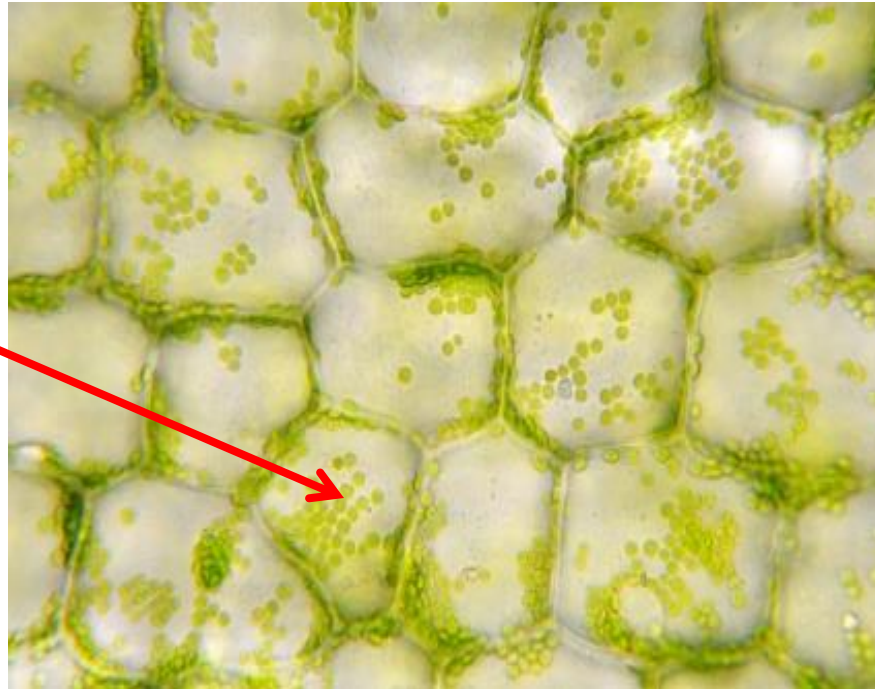
# Vacuole



A large, water filled organelle present in all plant and fungal cells and some animal and bacterial cells.

# Chloroplast

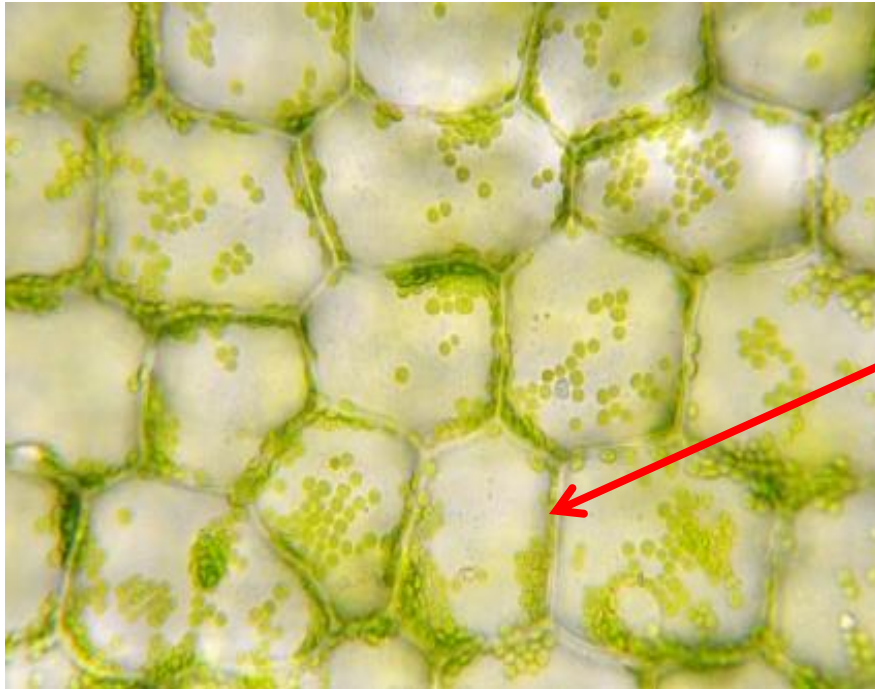
Chloroplast



A membrane-bound organelle in plants that is the site of photosynthesis.



# Cell Wall



Cell Wall

A tough, protective barrier that surrounds the outer membrane of some types of cells.